

69 Miles of Emergency Measures

42 Miles of Temporary Levee

8 Miles of Hesco

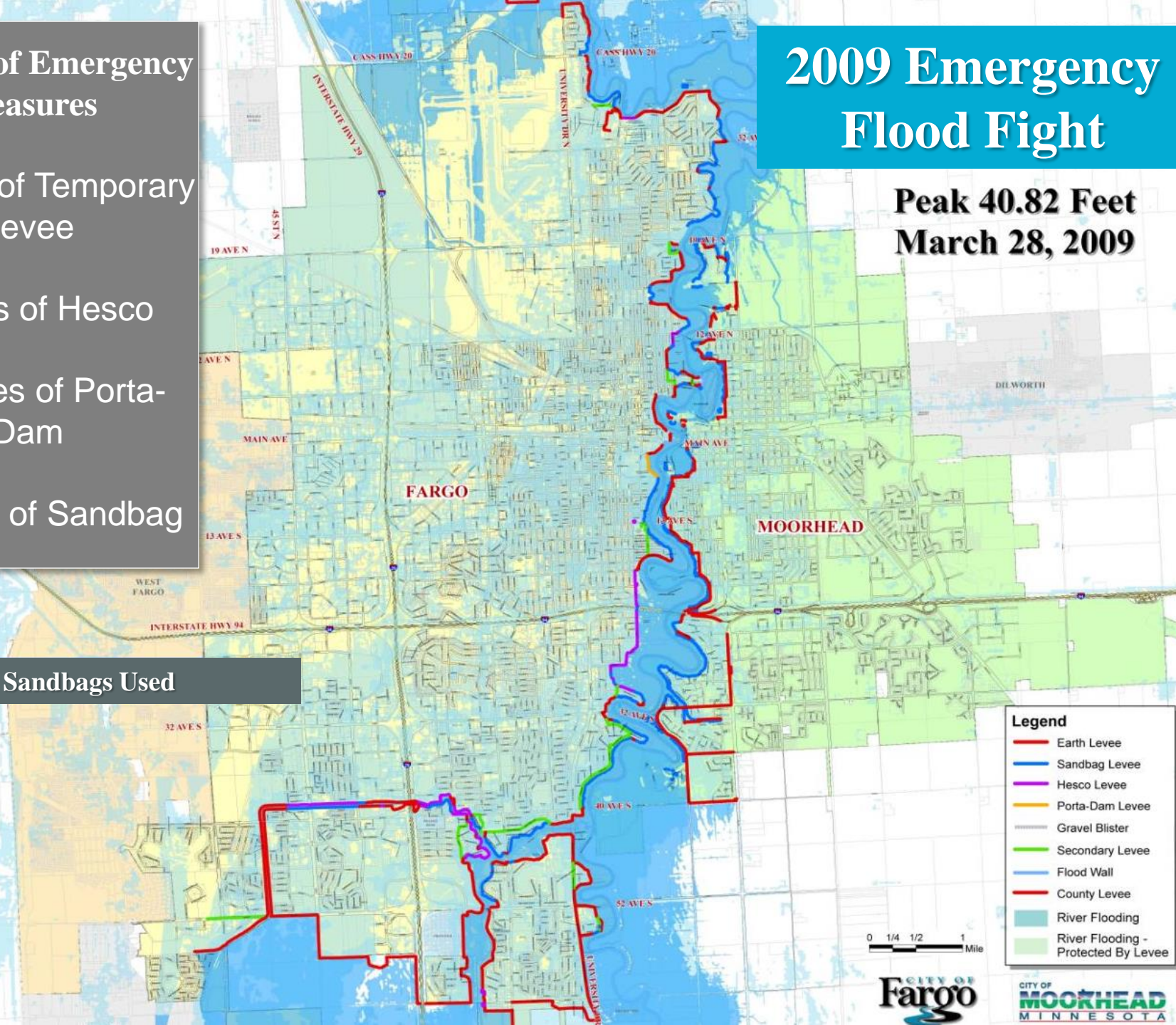
0.3 Miles of Porta-Dam

19 Miles of Sandbag

7.3+ Million Sandbags Used

2009 Emergency Flood Fight

**Peak 40.82 Feet
March 28, 2009**



Legend

- Earth Levee
- Sandbag Levee
- Hesco Levee
- Porta-Dam Levee
- Gravel Blister
- Secondary Levee
- Flood Wall
- County Levee
- River Flooding
- River Flooding - Protected By Levee

